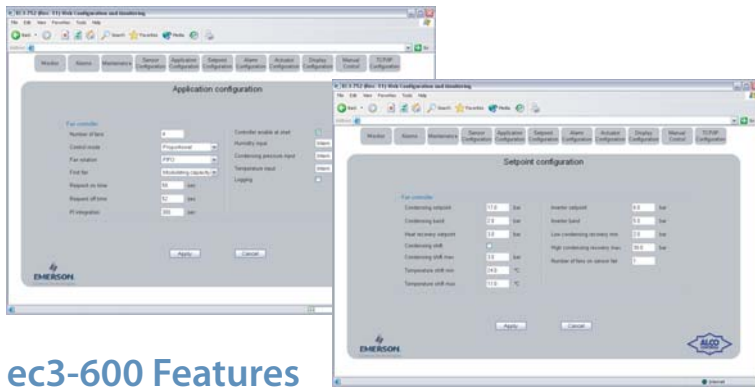


## Compressor / Condenser Control

The EC3 is a hardware platform for a range of digital controllers for multi-compressor pack and condenser applications. All of the devices offer standalone control capability together with network connectivity to enable integration into management systems.

## Network Capabilities

Network connection enables the controllers to communicate with each other or to third party management devices such as the Einstein or a monitoring server/PC. The EC3 can be supplied as either a LonWorks device to communicate across an Echelon RS485 network or alternatively as a TCP/IP device operating on an Ethernet network. The TCP/IP models generate HTML pages which can be viewed through a standard web browser.



## ec3-600 Features

- Suction pressure control for up to 8 compressors
- Control algorithms for equal/unequal capacity compressors
- Analogue output for variable capacity compressor control
- Run-time balancing
- Fast recovery algorithms
- Compressor proof inputs
- Temperature sensor inputs
- Common High & low pressure alarm inputs
- Alarm inputs for low refrigerant and Oil levels
- Compressor output relays rated at 230V AC with SPDT contacts

## ec3-700 Features

- Condensing pressure control with up to 6 fan stages
- Analogue output for variable speed condenser control
- Fan rotation & run time balancing
- Set-point shift and floating condensing pressure function
- Fast recovery algorithms
- Individual stage proof contacts
- Input for common high pressure alarm
- Heat recovery control
- Condenser output relays rated at 230V AC



## ec3-800 & 900

The EC3-800 and 900 series are digital controllers with two applications residing on a common hardware platform. The EC3-800 controller offers dual pressure compressor control typically used in retail applications. Therefore through a single controller regulation of both medium and low temperature compressors can be accomplished. The software features regarding the compressor control are identical to those within the EC3-600 device.

The EC3-900 controller combines both the compressor and condenser controllers into a single device. Through a single controller up to 4 compressors and 4 condenser fans can be regulated, one of which can be variable speed. All of the software features of both the EC3-600 and EC3-700 controllers are combined within.

## Universal ec3 Features

- Interface to Door mount display for Pressure, temperature and status indication
- Pushbutton facility on remote display or Infrared Hand held for parameter changes
- Network interface to remote management system
- Sensor failure handling
- Configuration data stored in non-volatile memory
- Aluminium enclosure for DIN-rail mounting
- Electrical connections via plug-in screw type connectors
- Local alarm management and indication
- CE approval